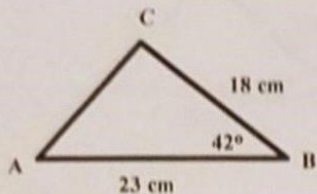


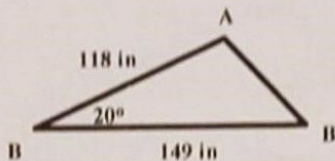
The Area of a Triangle Practice

Find the area (A) of each triangle. Show all work! Round your answers to the nearest tenth.

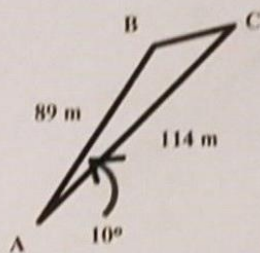
1. $K \approx 138.5 \text{ cm}^2$



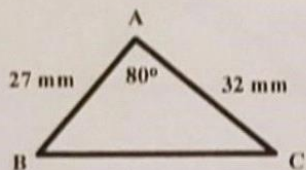
2. $K \approx 3006.7 \text{ in}^2$



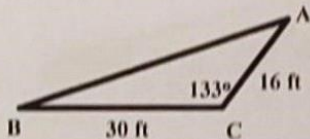
3. $K \approx 880.9 \text{ m}^2$



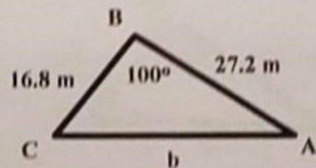
4. $K \approx 425.4 \text{ mm}^2$



5. $K \approx 175.5 \text{ ft}^2$

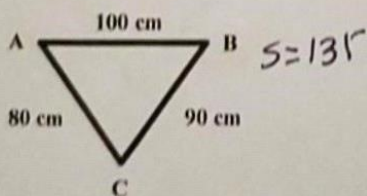


6. $K \approx 225 \text{ m}^2$

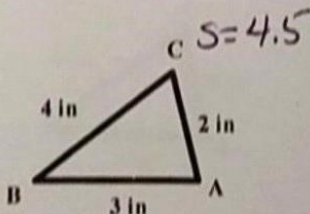


Use Heron's Formula to find the area (K) of each triangle. Show all work! Round your answers to the nearest tenth.

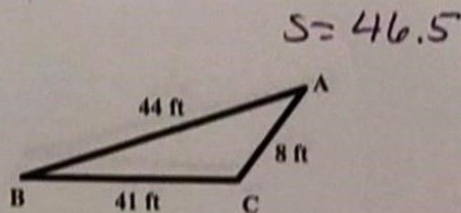
7. $K \approx 3419.7 \text{ cm}^2$



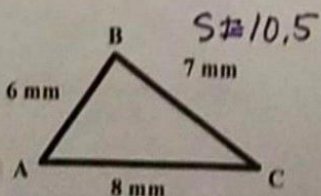
8. $K \approx 2.9 \text{ in}^2$



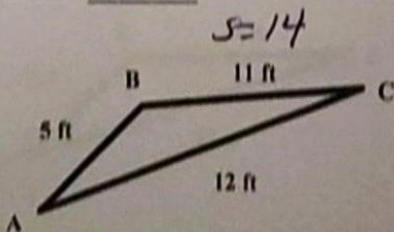
9. $K \approx 156.9 \text{ ft}^2$



10. $K \approx 20.3 \text{ mm}^2$



11. $K \approx 27.5 \text{ ft}^2$



12. $K \approx 216 \text{ m}^2$

