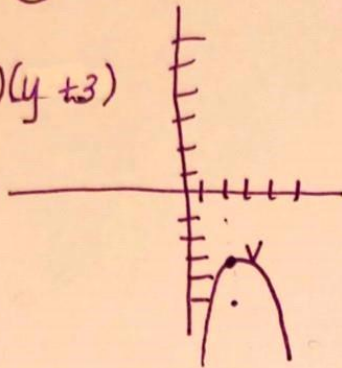


Sketch

Writing Equations given Vertex and Focus

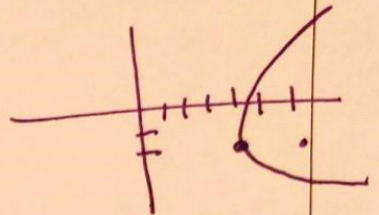
Vertex $(2, -3)$ Focus $(2, -5)$

$$(x - 2)^2 = 4(-2)(y + 3)$$



Vertex $(4, -2)$ Focus $(6, -2)$

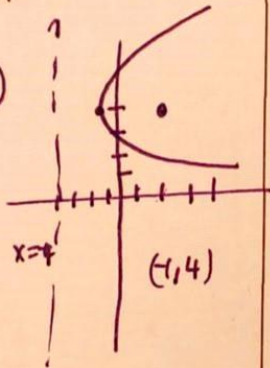
$$(y + 2)^2 = 4(2)(x - 4)$$



Writing Equations given Directrix and Focus

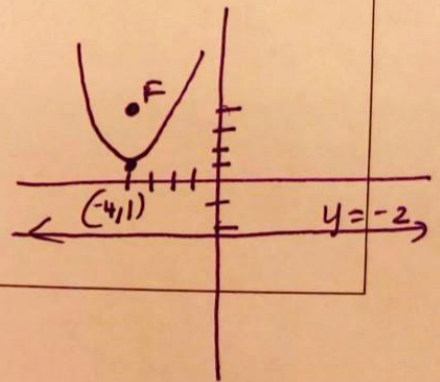
Focus: $(2, 4)$; directrix line: $x = -4$

$$(y - 4)^2 = 4(3)(x + 1)$$



Focus: $(-4, 4)$; directrix line: $y = -2$

$$(x + 4)^2 = 4(3)(y - 1)$$



Vertex is halfway between focus & directrix